

# TELINDUS 1320 SDSL ROUTER

> THE TELINDUS 1320 SDSL ROUTER IS A STATE-OF-THE-ART BASEBAND MODEM WITH INTEGRATED IP ROUTER OFFERING FULL DUPLEX TRANSMISSION UP TO 2.3 MBPS OVER A SINGLE TWO WIRE UNCONDITIONED UNSHIELDED TWISTED PAIR CABLE.



The line speed of the modem can be adapted to optimise the throughput as a function of the characteristics of the local loop.

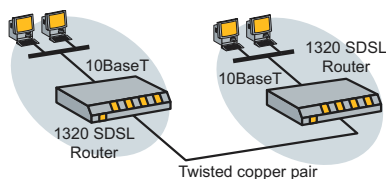
The Telindus 1320 SDSL Router can be used as a CPE in combination with frame relay or PPP based DSLAMs (e.g. Copper Mountain), or in a point to point set-up.

The unit comes with a direct Ethernet 10Base-T connection with integrated bridge and IP router functionality.

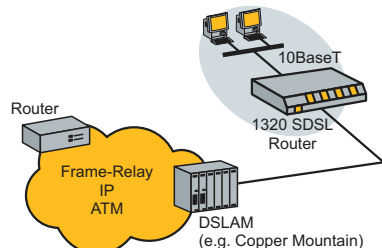
The Telindus 1320 SDSL Router is ideal for high-speed symmetrical Ethernet connectivity as it is generally required in professional environments for rolling out internet or LAN-to-LAN access.

When the integrated IP router forwards the packets, the LAN traffic is encapsulated for transmission over the WAN link. The router supports PPP and Frame-Relay encapsulation.

#### POINT TO POINT CONFIGURATION



#### IN COMBINATION WITH DSLAM ACCESS



#### SALES CODES

> 171966 Telindus 1320 SDSL Router 230VAC

Units without power module and separate power adapters can be found in the sales codes quick reference section

The Telindus 1320 SDSL Router supports auto-install features over the WAN network for both PPP and Frame-Relay. This makes it ideally suited for plug-and-play installation at customer premises while the configuration is prepared at a central site.

With a free user-friendly graphical Windows® application, the operator can configure a local equipment, but also a remotely installed unit by using a simple IP connection.

## FEATURES & BENEFITS

- > HIGH-SPEED BASEBAND MODEM WITH INTEGRATED IP ROUTER FOR USE ON A SINGLE UNSHIELDED TWISTED COPPER PAIR
- > VARIABLE LINE TRANSMISSION RATES UP TO 2.3 MBPS
- > COMPATIBLE WITH PPP OR FRAME RELAY BASED DSLAM EQUIPMENT
- > COMPATIBLE WITH COPPER MOUNTAIN COPPEREDGE DSLAMS
- > DIRECT 10BASE-T ETHERNET CONNECTIVITY
- > ADVANCED FREE MAINTENANCE SOFTWARE

#### LINE INTERFACE

- > Single pair line access
- > Connector: RJ12
- > Impedance: 135 ohm
- > Coding: 2B1Q (HDSL based)
- > Transmit level: 13.5 dBm
- > Line speeds: 128, 160, 208, 256, 320, 384, 416, 512, 768, 784, 1040, 1152, 1536, 1568, 2048, 2304, 2320 kbps

#### FRONT PANEL INDICATIONS

- > PWR: Power
- > TST: Test indicator
- > TXD: Transmit Data on WAN and SDSL Link status
- > RXD: Receive data on WAN
- > LAN/TXD: Transmit Data on LAN and Ethernet Link status
- > LAN/RXD: Receive data on LAN
- > COL: Collision detected on the LAN

#### LAN INTERFACE

- > RJ45 Unshielded Twisted Pair with automatic TP polarity reversal
- > Fully IEEE 802.3 compatible

#### SUPPORTED LAN PROTOCOLS

- > IP
- > Bridging of other protocols

#### SUPPORTED WAN ENCAPSULATION PROTOCOLS

- Frame-Relay (RFC 1490, RFC2427)
  - > Support of multiple DLCI's (PVC)
  - > CIR (Committed Information Rate) configurable per DLCI
  - > EIR (Excess Information Rate) configurable per DLCI
  - > Support of Inverse ARP over Frame-Relay for automatic gateway config.
  - > Support of LMI (revision 1 LMI, ANSI T1.617 and ITU-T)
- PPP (RFC1661, RFC1662)
  - > Support of Chap authentication with MD5 hashing (RFC 1994)

#### ROUTING PERFORMANCE

- > Processing speed: up to 14400 packets/sec
- > Forwarding on WAN link: up to 4000 packets/sec
- > Buffering: up to 4800 packets (64 bytes/packet)

#### IP ROUTING AND BRIDGING

- > Static routes
- > RIP version 2 with MD5 hashing and authentication (RFC2453)
- > Bridging with spanning tree

#### AUTOINSTALL SUPPORT

- > DLCI number configuration: LMI (Frame-Relay only)
- > IP address configuration: BootP client (RFC951)
  - IPCP (for PPP only)
- > Gateway configuration: Inverse ARP (Frame-Relay only)
  - IPCP (PPP only)
- > Full configuration: Automatic TFTP configuration download (RFC1350)
- > Copper Mountain auto baud

#### IDEAL MAXIMUM DISTANCE (NOISE-FREE)

SPEED	0.4 MM	0.5 MM	0.6 MM	0.8 MM	1.0 MM	1.2 MM
	26 AWG (KM)	24 AWG (KM)	(KM)	20 AWG (KM)	18 AWG (KM)	(KM)
128 kbps	6.6	9.0	12.9	16.3	22.8	25.5
256 kbps	5.8	7.9	11.4	14.3	20.1	22.4
384 kbps	5.3	7.3	10.4	13.1	18.3	20.5
512 kbps	4.9	6.7	9.6	12.1	17.0	18.1
768 kbps	4.5	6.2	8.8	11.1	15.6	17.4
1152 kbps	4.0	5.5	7.8	9.9	13.8	15.4
1536 kbps	3.5	4.8	6.9	8.6	12.1	13.5
2048 kbps	2.9	4.0	5.7	7.2	10.0	11.2
2304 kbps	2.7	3.7	5.3	6.7	9.3	10.4

#### FIREWALL FUNCTIONS

- Access filtering on LAN and WAN interfaces
- > Source IP Address
- > Destination IP Address
- > Source port number
- > Destination port number
- > IP protocol field

#### ADDITIONAL ROUTER FEATURES

- > NAT (Network Address Translation) with dynamic or static IP address conversion
- > PAT (Port Address Translation)
- > BOOTP/DHCP server, relay agent (RFC2131, RFC2132)
- > Numbered/unnumbered WAN Interface
- > L2TP tunneling
- > Diffserv COS

#### MAINTENANCE AND MANAGEMENT SUPPORT

- > Local console (command line interface or interactive interface)
- > TELNET (command line interface or interactive interface)
- > TMA (Telindus Maintenance Application)
- > TFTP configuration download
- > HTTP webserver
- > PING
- > SNMP Mib2, private Mib
- > Software flash download
- > TMA CLI stand-alone command line console software\*
- > TMA for HP OV management integration in HP Openview\*

#### MECHANICAL DATA (H X W X D)

- > 38 x 150 x 270 mm weight: 0.6 kg (excl. power supply)

#### POWER REQUIREMENTS

- > 7.5 Vdc, 500mA
- > 230 Vac Power adapter included

\* optional

MORE INFO:  
TELINDUS  
Geldenaaksebaan 335  
B-3001 Heverlee  
Belgium

TEL +32 16 38 20 11  
FAX +32 16 40 01 02  
E-MAIL productinfo@telindus.com  
www.telindusproducts.com

**TELINDUS**  
Access Products

the first choice for the I@st mile